

Digital Photo Frame

User manual

800P
1000P

Click

- › Contents
- › Safety precautions
- › Get started
- › Play multimedia
- › Browse and manage multimedia
- › Use the Bluetooth wireless feature
- › Customize settings
- › Appendix
- › Index

Read this manual thoroughly for proper use and maintenance instructions.

The images and screen shots used in this manual are from the 800P.

Instructional icons

Before you start, familiarize yourself with the icons you will see in this manual:



Caution - situations that could cause damage to your device or other equipment



Note - notes, usage tips, or additional information

©2010 SAMSUNG ELECTRONICS CO., LTD.

- It is strictly forbidden to copy or distribute the contents of this manual without permission from SAMSUNG ELECTRONICS CO., LTD
- Product specifications or contents of this manual may be changed without prior notice due to upgrade of product functions.

Contents

Safety precautions 3

Get started 6

What's in the box	6
Get to know your frame	7
Set up your frame	10
Connect the adapter and turn the power on	10
Customize basic settings	11
Get to know the Main menu	12
View the time and date	13
Connect external memory devices	14
Select a memory location	15
Connect to a PC	16
Transfer files from a PC	17

Play multimedia 19

Play a slideshow	19
Play videos	24
Play music	26

Browse and manage multimedia 28

Browse files	28
Manage files	29

Use the Bluetooth wireless feature.. 32

Find and pair with other Bluetooth-enabled devices	32
Get data using the Bluetooth wireless feature	33
Use Bluetooth menus	34
Information for using Bluetooth	35

Customize settings..... 36

Adjust slideshow effects	36
Set the time and date	36
Set and use alarms	37
Customize general settings	39
Customize Bluetooth settings	40
Update or reset the frame	41

Appendix..... 42

Use as a PC mini-monitor	42
Update Firmware	43
Troubleshooting	44
Specifications	46
Correct disposal of the frame	47
Contact information of Samsung Worldwide	48
Software License	49
Index	50

Safety precautions

WARNING:

- TO PREVENT ELECTRIC SHOCK, DO NOT OPEN OR REMOVE THE COVER OR BACK OF THE FRAME. THERE ARE NO USER-SERVICEABLE PARTS INSIDE. ALLOW ONLY QUALIFIED PERSONNEL TO SERVICE THIS FRAME.
 - TO PREVENT FIRE, KEEP THIS FRAME AWAY FROM ALL OPEN FLAMES, SUCH AS CANDLES, AT ALL TIMES.
-
- The slots and openings in the frame provide needed ventilation. To ensure reliable operation and prevent overheating, these openings must not be blocked or covered:
 - Do not cover the slots or openings.
 - Do not block the slots or openings by placing the frame on soft surfaces, such as beds, sofas, or rugs.
 - Do not place the frame in an enclosed space, such as a bookcase or cabinet, without proper ventilation.
 - Do not place the frame near or on sources of heat, such as radiators, or in direct sunlight.
 - Do not allow the frame to come in contact with water. Do not place the frame near sources of water, such as bathtubs or sinks, or where water or other liquids may splash or drip on the frame. If the frame gets wet, unplug the frame immediately and contact the dealer or an authorized service center.
 - Do not overload wall outlets, extension cords, or adaptors beyond their intended capacity, as this may result in fire or electrical shock.
 - Route all power supply cords away from traffic areas and other objects so that they are not likely to be stepped on or pinched by items placed on or against them. Ensure that wires are not twisted or pinched at plug ends or adapter connections.
 - During electrical storms or when the frame will be unattended and unused for extended periods of time, unplug the frame from the wall. This will prevent damage to the frame from electrical surges.
 - Before connecting the power cord, make sure that the voltage designation of the frame corresponds to the local electrical supply.

Safety precautions

- Never insert any metal objects into the open parts of this frame, as this may result in electrical shock. Ensure that the power cord is completely plugged in when using this frame. Grasp the plug firmly when removing the power cord and never touch the power cord with wet hands.
- If you notice any unusual operation, such as unusual sounds or burning smells coming from the frame, unplug it immediately and contact the dealer or an authorized service center.
- It is not recommended to install the frame in a location where it will be exposed to heavy dust, high or low temperatures, high humidity, or chemical substances or where it operates continuously.
- Use only properly grounded plugs and outlets when connecting this frame. Improper grounding may cause electrical shock or damage to equipment.
- Keep this frame and all accessories out of the reach of children.
- Do not install the frame in unstable locations, such as improperly mounted shelves, angled surfaces, or where the frame may be exposed to vibration.
- Do not drop the frame or subject the frame to any strong impacts. If the frame is damaged, disconnect the power cord and contact a dealer or an authorized service center.
- Always unplug the power cord when cleaning the frame. Use only a soft, dry cloth to wipe frame. Do not expose the frame to any chemicals, such as waxes, benzene, alcohol, thinners, insecticides, air fresheners, lubricants, or detergents, as these may damage the frame's finish and void your warranty.
- Clean the product with a soft dry cloth.
 - Avoid cleaning the product with a flammable substance such as benzene or thinner or with a wet cloth. This may result in damage to the product.
 - Avoid scratching the screen with your fingernails or a sharp object.
 - Avoid cleaning the product by spraying water onto it. If water enters the product, it may result in fire, electric shock or malfunction.
 - Avoid using a supersonic humidifier near the product. It may result in a white stain on the surface of the product.

Safety precautions



Correct disposal of this product

(Waste Electrical & Electronic Equipment)



(Applicable in the European Union and other European countries with separate collection systems)

This marking on the product, accessories or literature indicates that the product and its electronic accessories (e.g. charger, headset, USB cable) should not be disposed of with other household waste at the end of their working life.

To prevent possible harm to the environment or human health from uncontrolled waste disposal, please separate these items from other types of waste and recycle them responsibly to promote the sustainable reuse of material resources.

Household users should contact either the retailer where they purchased this product, or their local government office, for details of where and how they can take these items for environmentally safe recycling.

Business users should contact their supplier and check the terms and conditions of the purchase contract. This product and its electronic accessories should not be mixed with other commercial wastes for disposal.



Correct disposal of batteries in this product

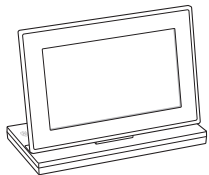
(Applicable in the European Union and other European countries with separate battery return systems.)

This marking on the battery, manual or packaging indicates that the batteries in this product should not be disposed of with other household waste at the end of their working life. Where marked, the chemical symbols Hg, Cd or Pb indicate that the battery contains mercury, cadmium or lead above the reference levels in EC Directive 2006/66. If batteries are not properly disposed of, these substances can cause harm to human health or the environment.

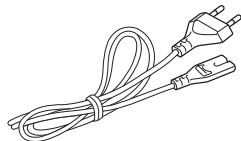
To protect natural resources and to promote material reuse, please separate batteries from other types of waste and recycle them through your local, free battery return system.

Get started

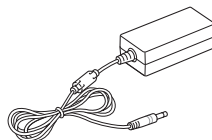
What's in the box



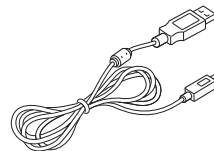
Digital frame



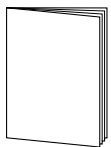
Power cable*



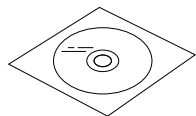
Adapter



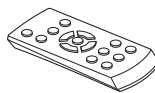
USB cable



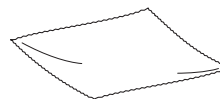
Quick Start Guide
and Warranty**



CD-ROM
(User Manual)



Remote control



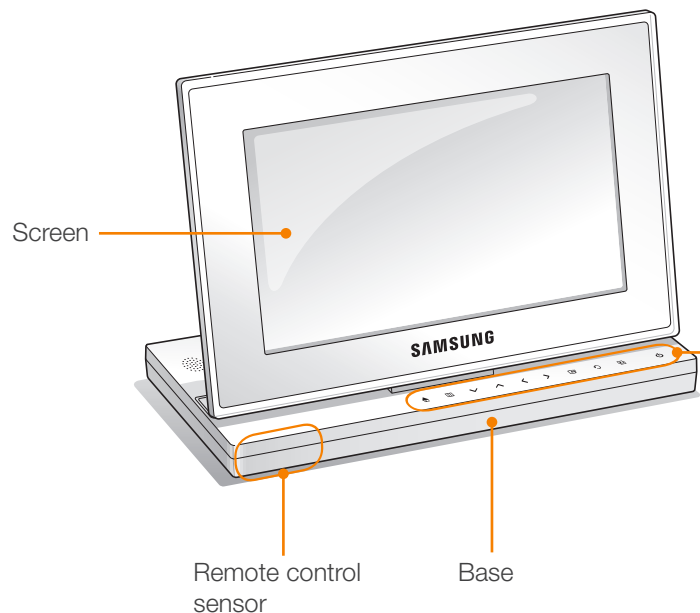
Cloth

* The shape of the plug may differ depending on your region.

** Warranty may be unavailable depending on your region.

Get to know your frame

The front of your frame



Touch button*	Description
	Turn the frame on; Turn the frame off (touch and hold)
	Access the Main menu
	Access menus
	Scroll through menus or items (up/down/left/right)
	Select menus or items; Perform selected functions
	Return to the previous level
	Play a slideshow in an any screen; Change the view mode during a slideshow

* The descriptions in this manual are based on the touch button. Please read this manual carefully and use correctly.



When using the touch buttons

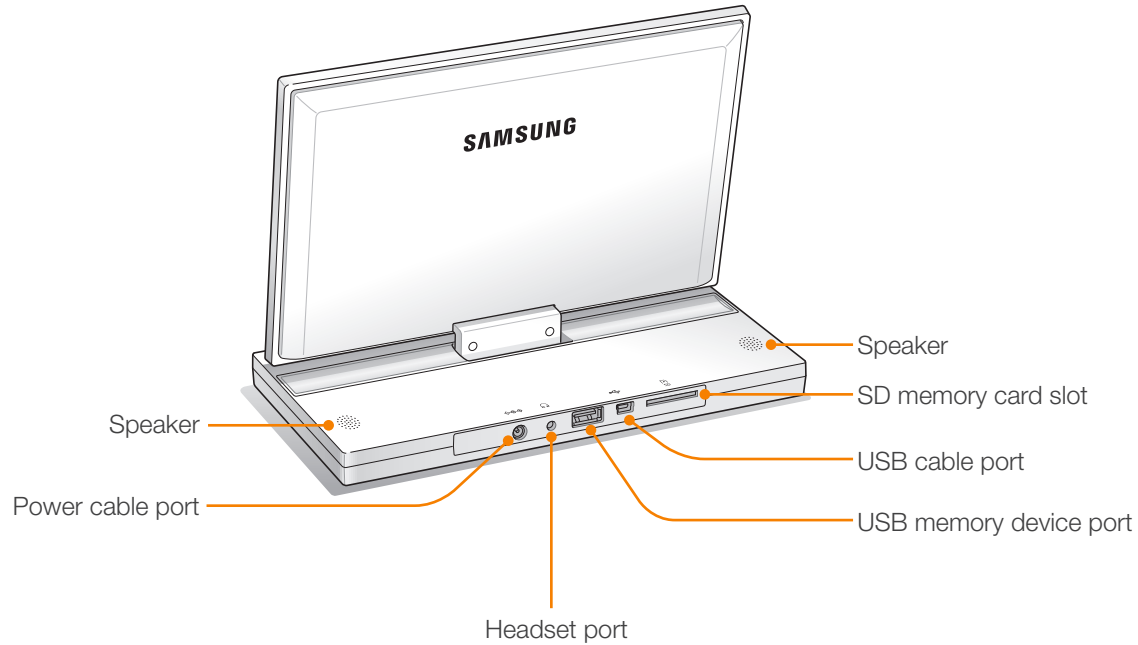
- Operate the touch buttons only with your fingers. Make sure your hands are clean and dry when using the touch buttons.
- Lightly touch the button that corresponds to the desired function.
- The touch sensor may not work properly when wet or in humid places.
- When the touch buttons disappear, lightly touch the touch panel to make the buttons visible.



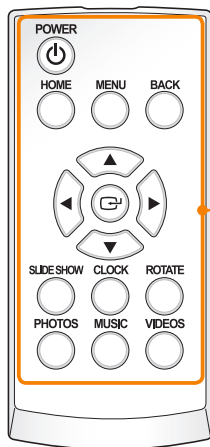
Get started

Get to know your frame (continued)

The rear of your frame

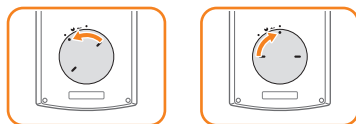


Remote control



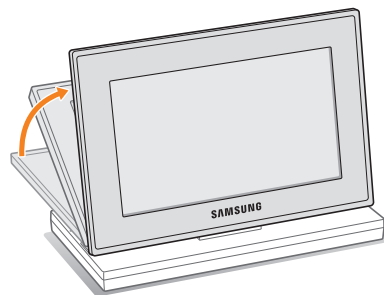
Button	Description
	Turn the frame on or off
	Access the Main menu
	Access menus
	Return to the previous level
	Scroll through menus or items (up/down/left/right)
	Select menus or items
	Play a slideshow in any screen; Change the view mode during a slideshow
	View the time and date
	Rotate a photo during a slideshow
	Access the photo list screen
	Access the music list screen
	Access the video list screen


- Be sure to point the remote control to the remote control sensor on the frame (p. 7).
- Open the battery cover by turning to the left, replace the battery, and close the battery cover by turning to the right.



Get started

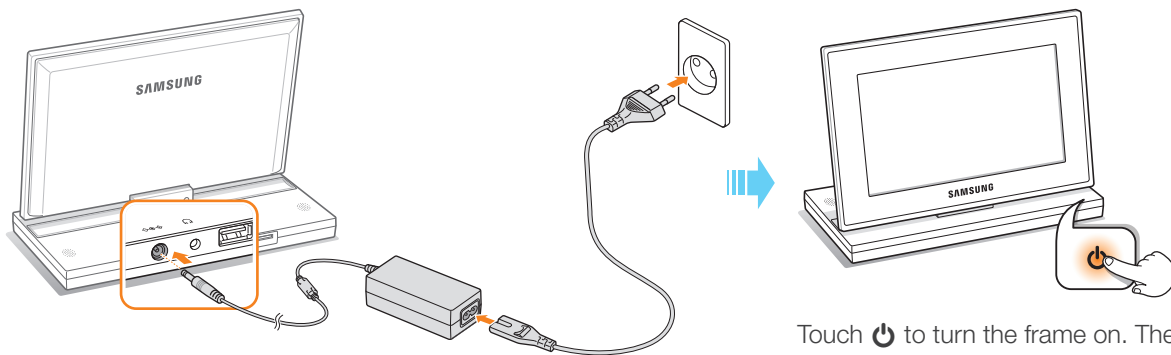
Set up your frame







 Do not put too much pressure on the frame or force the screen to rotate in the wrong direction, as this may damage the frame.



Connect the adapter and turn the power on

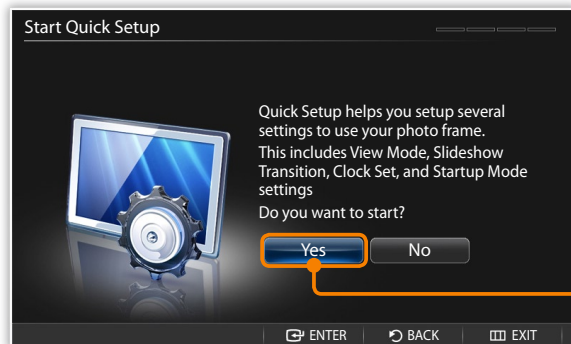



 The shape of the plug may differ depending on your region.

Touch  to turn the frame on. The light on  will turn and the Main menu will appear.
To turn the frame off, touch and hold .

Customize basic settings

When you turn the frame on for the first time, the Quick setup screen appears. Select a language and customize the basic settings of your frame.



- 1 Scroll to your language and touch .
- 2 Select **Yes** to start the setup wizard.
- 3 Follow the on-screen instructions to customize your frame according to your preferences.

Setting	Description
View Mode	Select a view mode for a slideshow (p. 20)
Slideshow Transition	Select a transition effect for a slideshow (p. 22)
Clock Set	Set the current time and date (p. 13)
Startup Mode	Select a mode to activate when the frame turns on (p. 39)

- 4 When you complete the setup, select **Yes** to view the product guide.
- 5 Review the basic usage instructions for your frame, and then select **Done**.




Get to know the Main menu

From the Main menu screen, you can access the following menus.



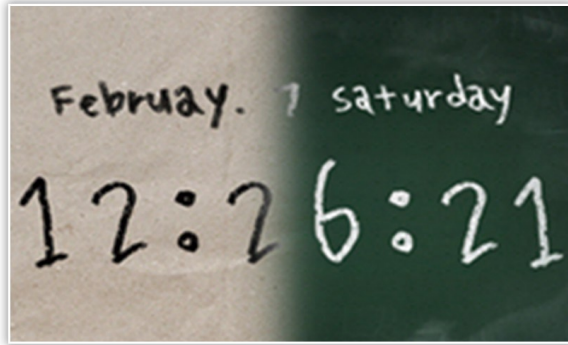
Menu	Description
Photos	Browse photos stored in the internal memory or on an external memory device and change options (p. 19)
Music	Listen to music stored in the internal memory or on an external memory device and change options (p. 26)
Videos	View videos stored in the internal memory or on an external memory device and change options (p. 24)
Bluetooth	Use the Bluetooth wireless feature to connect to other wireless devices (p. 32)
Clock	View the current time and date (p. 13)
Mini Monitor	Use the frame as a supplementary monitor for your PC (p. 42)
Settings	Customize settings (p. 36)

- You can set other functions to be activated instead of the Main menu when you turn the frame on (Startup Mode p. 39).
- While you are using other functions or the screensaver is active, touch  to access the Main menu screen.



View the time and date

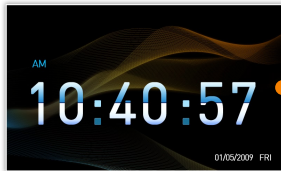
Check the current time and date or customize clock settings.



▲ Clock 1



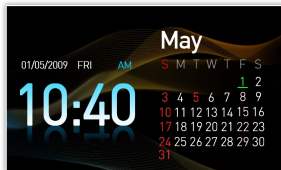
▲ Clock 2



▲ Clock 3



▲ Clock & Calendar 1



▲ Clock & Calendar 2

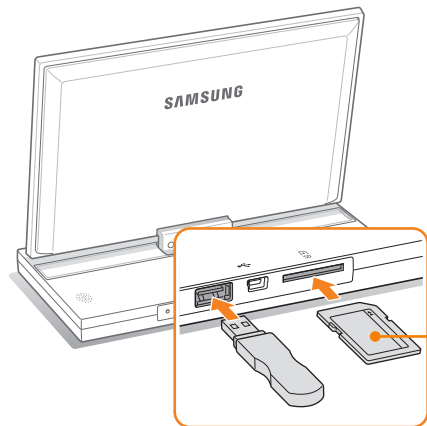
- 1 From the Main menu screen, scroll to **Clock** and touch .
 - The current time and date will display.
- 2 Touch and select **Settings**.
- 3 Scroll to **Clock** and touch .
- 4 Scroll to one of the following options and touch .
 - For **Clock Set**, touch **<** or **>** to select the option you want and touch **^** or **v** to set the value.

Option	Description
Clock Set	Set the current time and date
Date Format	Select how dates display (YYYY.MM.DD, MM.DD.YYYY, DD.MM.YYYY)
Time Format	Select how time displays (12 Hours, 24 Hours)
Clock Type	Select the clock type (Clock 1~3, Clock & Calendar 1~2)

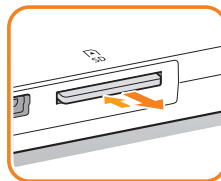


Connect external memory devices

You can connect USB memory devices or SD memory cards to the frame. The frame supports FAT16 and FAT32 file format systems for external memory devices.



Insert an SD memory card with the metal contacts facing down. Push the card in until it locks in place.



To remove the SD memory card, push it gently until it disengages from the frame.

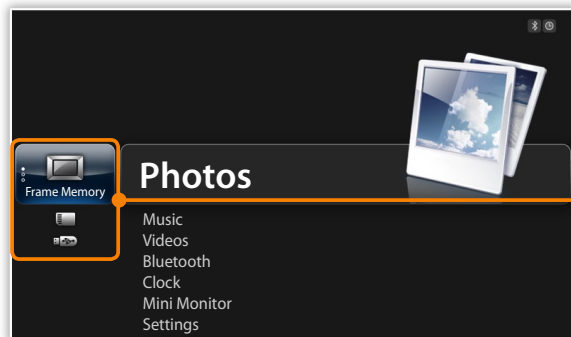
- If you connect an external memory device while the power is on, a pop-up window will appear. To start a slideshow of photos stored in the external memory device, select **Slideshow**.
- Recommended memory capacities for different types of memory cards:

SD	Up to 2 GB
microSD	Up to 2 GB
miniSD	Up to 2 GB
SDHC	Up to 32 GB
microSDHC	Up to 8 GB
miniSDHC	Up to 4 GB
USB	Up to 32 GB




Select a memory location

When there is an external memory device (SD memory card or USB memory device) connected, you can select the source of files.



1 From the Main menu screen, scroll to the memory location list.

2 Scroll to one of the following memory locations and touch .

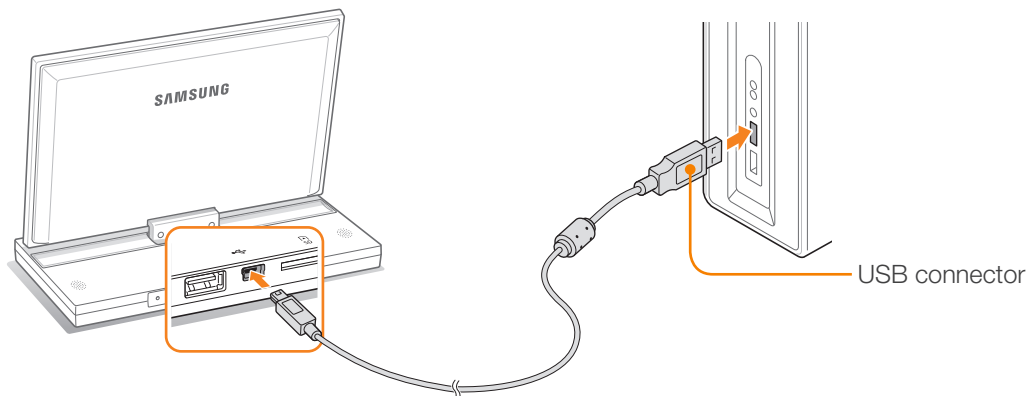
Memory location	Description
Frame Memory	Internal memory
SD Card	SD memory card (external)
USB	USB memory device (external)

 You can also change the memory location while browsing photos by touching  and selecting **Select Storage Device** (p. 29).

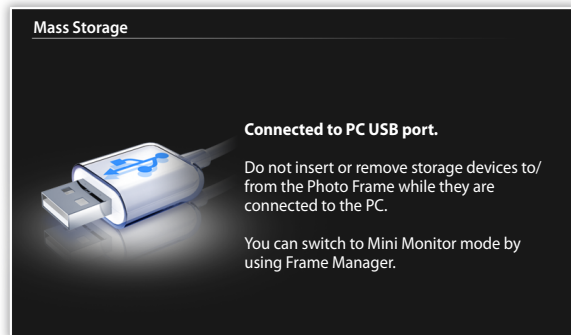
Get started

Connect to a PC

You can transfer files (p. 17) or use the frame as a mini-monitor by connecting it to a PC (p. 42).
Connect the smaller end of the USB cable to the frame and the larger end to the USB port of a PC.



Transfer files from a PC



- Some files are embedded on the frame by default. When there is not enough memory, delete these stock files.
- If your photos are large, they will consume more memory and the preview will play slowly. Change the photo resolution to 800 X 480 (for '800P') or 1024 X 600 (for '1000P'). Or set the frame to copy and automatically resize your photos (Frame Memory Copy p. 39).

To transfer files from a PC

- 1 Connect the frame to a PC with the supplied USB cable (p. 16).
 - ☞ When the frame is turned off, connect it to the PC first, and then turn it on.
- 2 Select **Mass Storage**.
 - When connected, 'Mass Storage' will appear on the screen and a pop-up window will appear on the PC.
 - ☞ If you connect the frame to a PC while using it as a mini-monitor (p. 42), you need to switch to Mass Storage mode by using the Frame Manager program. For more information, refer to the user manual of the Frame Manager.
- 3 Open a folder to view files.
 - The removable disk drive will appear as '800P' or '1000P' on the PC. Open the drive for the corresponding model in My Computer and copy your photos.
- 4 Copy files from the PC to the frame or vice versa.



Get started

Transfer files from a PC (continued)

To disconnect the frame from a PC

Make sure to end the connection properly to prevent damage to the frame or your data.

1 Click  on the Windows Taskbar.



2 Click the pop-up message.



3 Disconnect the USB cable only when the message says that it is safe to remove the hardware.

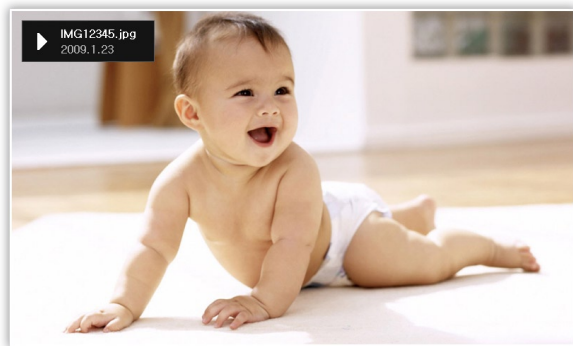







- Do not disconnect the USB cable while the files are being copied, as this could result in loss of data or damage to the frame.
- The connection will not end if you have frame files open on the PC. Close all frame files and try again.










Play multimedia

Play a slideshow



- 1 From the Main menu screen, select a memory location (**Frame Memory**, **SD Card**, or **USB**).
- 2 Scroll to **Photos** and touch .
- 3 Scroll to a file and touch  or  to play a slideshow.
 To play a slideshow with specific photos, touch  and select **Select Multiple Files** (p. 29).
- 4 Control playback using the following buttons:

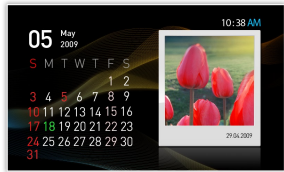
Touch buttons	Description
	Access the Main menu
	Access the slideshow menu
	Adjust the volume of the background music
	View the previous or next photo
	Pause or resume the slideshow
	Return to the previous level
	Change the view mode



▲ Photo Only



▲ Photo & Clock



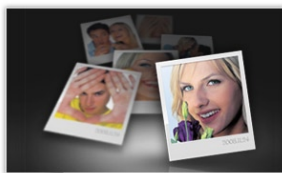
▲ Photo & Calendar



▲ Multiview 1




▲ Multiview 2




▲ Multiview 3

Change the view mode

Display a clock or calendar during a slideshow or multiple photos on one screen during a slideshow.

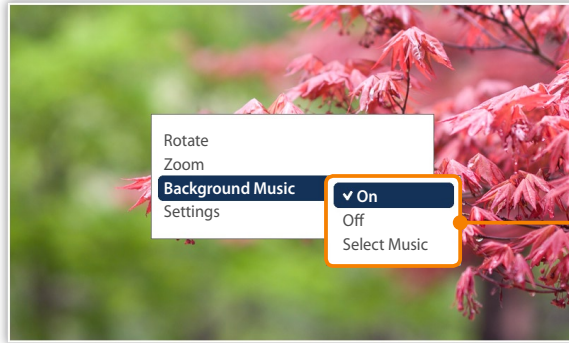
Touch  repeatedly during a slideshow to change the view mode.

- Each time you touch , the view mode changes (**Photo Only** → **Photo & Clock** → **Photo & Calendar** → **Multiview 1** → **Multiview 2** → **Multiview 3**).





- You can also change the view mode by accessing **View Mode** in **Settings** → **Photos** (p. 23).

- Set the current time and date before displaying the clock or calendar (p. 36).
- You can view the previous or next photo by touching **<** or **>** during a slide show.












Use slideshow menus

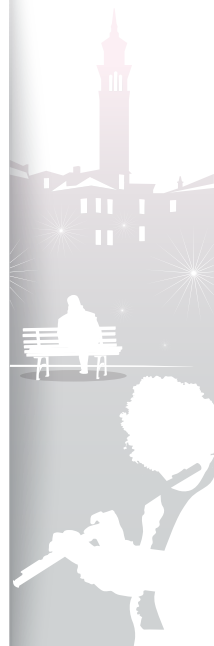
Control a slideshow and adjust the slideshow settings.

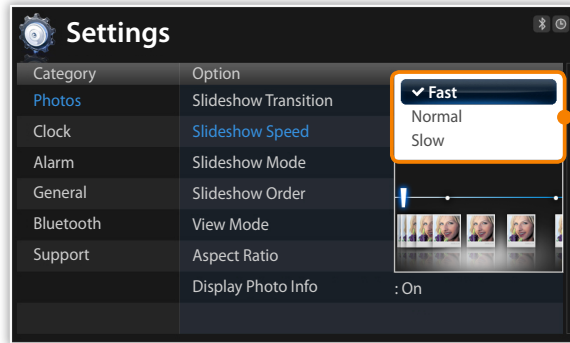
- 1 Touch  during a slideshow.
- 2 Scroll to one of the following menus and touch .

Option	Description
Rotate	Rotate a photo (Original , 90°, -90°, 180°)
Zoom	Enlarge in a photo (x1 , x2 , x4)
Background Music	Turn the background music on or off
Settings	Access the Settings menu (p. 22)

-  • You can rotate or zoom a photo only in **Photo Only** and **Photo & Clock** modes.
- When you zoom a photo, you can move around the photo by touching , , , or . To exit the zoom mode, touch .



- 3 When you are finished, touch .
 - When you touch  in the **Settings** menu, the Main menu appears. To play the slideshow, touch .





Select slideshow effects

Adjust the transition effect, speed, play mode, or order of photos for a slideshow.

- 1 Touch  during a slideshow.
- 2 Select **Settings**.
- 3 Scroll to **Photos** and touch .



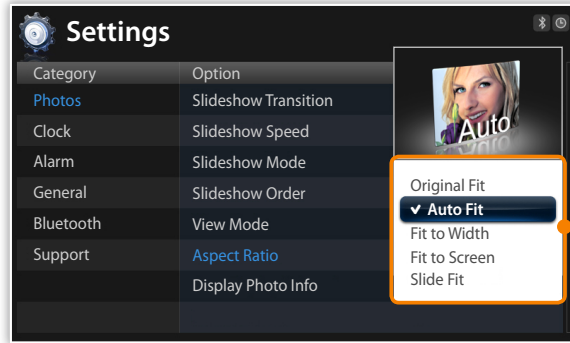
You can also select slideshow effects by accessing **Photos** in **Settings**.

- 4 Scroll to one of the following options and touch .

Option	Description
Slideshow Transition	Select a transition effect (No Effect, Fade, Blinds, Cross Comb, Checkerboard, Slide, Wipe, Silk, Wheel, Circle, Box In/Out, Diamond, Plus, Uncover, Push, Stairs, Random)
Slideshow Speed	Select a slideshow speed (Fast, Normal, Slow)
Slideshow Mode	<ul style="list-style-type: none">• All photos: Play all photos in the order of file names• Photos in folder: Play all photos in the selected folder in the order of file names• One photo: Repeat the selected photo




Play a slideshow (continued)

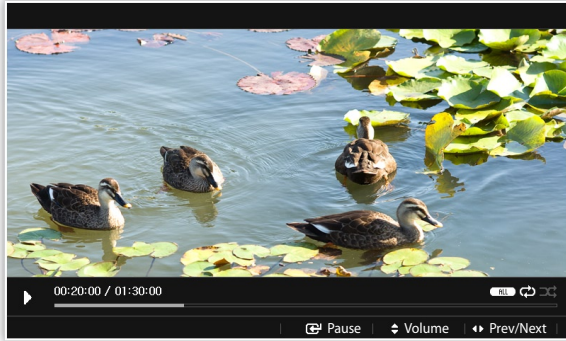


Option	Description
Slideshow Order	<ul style="list-style-type: none"> • Normal: Play photos in the order of file names • Shuffle: Play photos in a random order
View Mode	<p>Change the view mode (p. 20)</p> <ul style="list-style-type: none"> • Original Fit: Display photos in the original sizes. When a photo is larger than the screen, it will be adjusted to fit the screen in the same ratio • Auto Fit: Resize photos to fit the screen in the same ratio (some parts of the photo may not appear) • Fit to Width: Resize photos to fit the screen width • Fit to Screen: Resize photos to fill the screen • Slide Fit*: Resize photos to fit the longest edge to screen. The frame will automatically scroll through the remainder of the photos from left to right or top to bottom (for example, panorama photo or portrait photo)
Aspect Ratio	
Display Photo Info	Set the slideshow to display details of each photo

* In **Slide Fit** mode, if you attempt to view photos with resolutions below 184 ppi or with a longest edge greater than 2600 pixels, the photo may appear distorted.



5 Touch  to play the slideshow.







Play videos





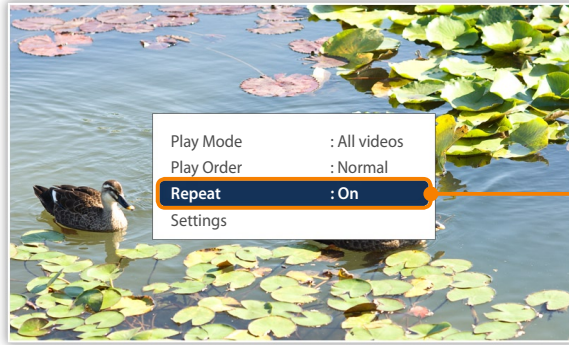
Optimal video resolution or codec

Video	Bit rate	1000 ~ 1500 Kbps
	Resolution	<ul style="list-style-type: none"> • 800P : 640 X 384 • 1000P : 640 X 375
Audio	AVI	MP3, 48 KHz (sampling rate), 2 channel, 128 Kbps
	MP4	mp4a (AAC-LC), 48 KHz (sampling rate), 2 channel, 128 Kbps

- 1 From the Main menu screen, select a memory location (**Frame Memory**, **SD Card**, or **USB**).
- 2 Scroll to **Videos** and touch .
- 3 Scroll to a file and touch  to play a video.
- 4 Control playback using the following buttons:

Touch button	Description
	Access the Main menu
	Access the video menu
	Adjust the volume
	Skip backward or forward; Scan backward or forward in a file (touch and hold)
	Pause or resume the playback
	Return to the previous level

-  If the frame is not in use for some time while pausing a video, the screensaver will appear. To return to the video player screen, touch any button except for .



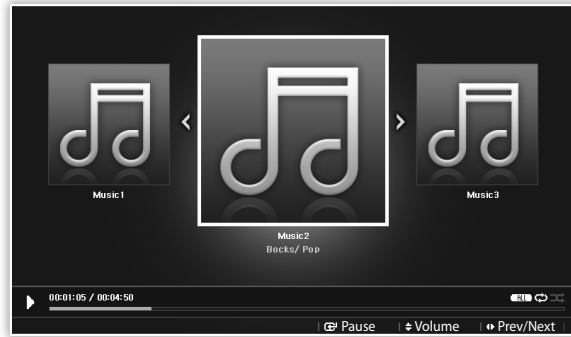
Use video menus



- 1 Touch during playback.
- 2 Scroll to one of the following options and touch .







Option	Description
Play Mode	<ul style="list-style-type: none">• All videos: Play all videos in the order of file names• Videos in folder: Play all videos in the selected folder in the order of file names• One video: Repeat the selected video
Play Order	<ul style="list-style-type: none">• Normal: Play videos in the order of file names• Shuffle: Play videos in a random order
Repeat	Set to play repeatedly
Settings	Access the Settings menu



- 3 When you are finished, touch .
 - When you touch in the **Settings** menu, the Main menu appears. To play the video, refer to steps 1~3 in "Play videos."

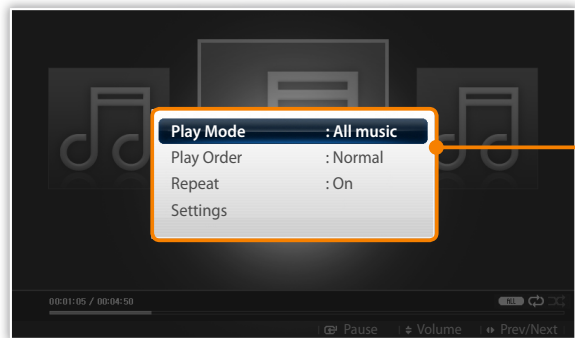
Play music





- 1 From the Main menu screen, select a memory location (**Frame Memory**, **SD Card**, or **USB**).
- 2 Scroll to **Music** and touch .
- 3 Scroll to a file and touch  to play music.
- 4 Control playback using the following buttons:

Touch button	Description
	Access the Main menu
	Access the music menu
	Adjust the volume
	Skip backward or forward; Scan backward or forward in a file (touch and hold)
	Pause or resume the playback
	Return to the previous level



-  • If the frame is not in use for some time while not playing music, the screensaver will appear. To return to the music player screen, touch any button except for .
- When you play music files encoded in a variable bit rate (VBR), the playback time shown on the screen may differ from the actual playback time.



Use music menus

- 1 Touch  during playback.
- 2 Scroll to one of the following options and touch .

Option	Description
Play Mode	<ul style="list-style-type: none">• All music: Play all music files in the order of file names• Music in folder: Play all music files in the selected folder in the order of file names• One music: Repeat the selected music file
Play Order	<ul style="list-style-type: none">• Normal: Play music files in the order of file names• Shuffle: Play music files in a random order
Repeat	Set to play repeatedly
Settings	Access the Settings menu

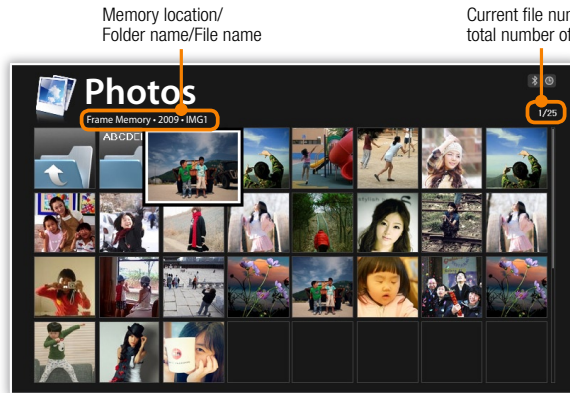
- 3 When you are finished, touch .
- When you touch  in the **Settings** menu, the Main menu appears. To play the music, refer to steps 1~3 in “Play music.”











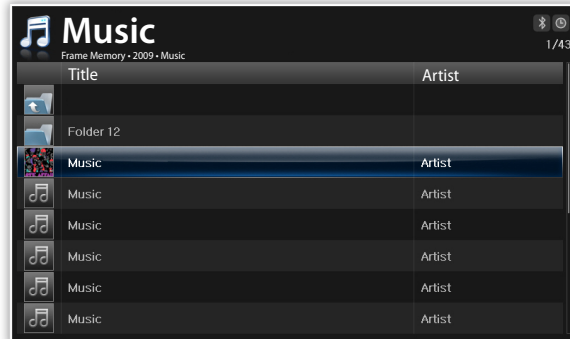
Browse and manage multimedia

Browse files

Access the **Photos**, **Videos**, or **Music** menus and browse files.

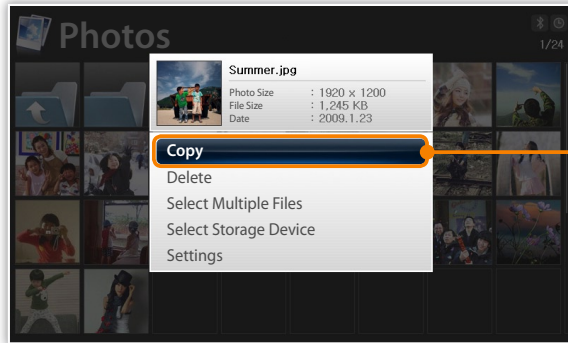


- 1 From the Main menu screen, select a memory location (**Frame Memory**, **SD Card**, or **USB**).
 - 2 Scroll to **Photos**, **Videos**, or **Music** and touch .
 - 3 Touch , , , or  to browse files.
 - To view files in a folder, scroll to the folder and touch .
-  If the frame is not in use for some time, the screensaver will appear. Touch  to access the currently used screen.



Manage files

Copy or delete files stored in internal memory or external memory devices.



1 While browsing files, touch .

2 Scroll to one of the following options and touch .




Option	Description
Copy	Copy the selected folder or file to another memory location (p. 30)
Delete	Delete the selected folder or file (p. 31)
Select Multiple Files	Select multiple files to view as a slideshow, copy, or delete
Select Storage Device	Change the memory location (p. 15)
Settings	Access the Settings menu (p. 36)

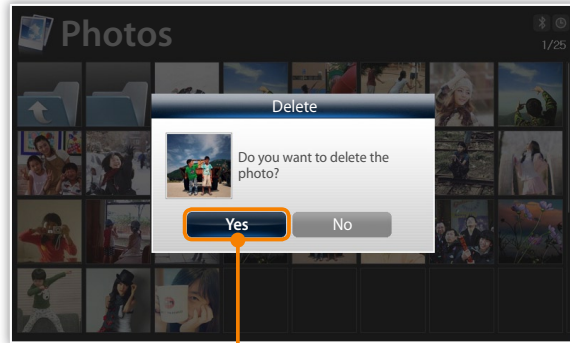


- Photos copied to the frame will be automatically resized to be optimal for the screen. To copy the photos in their original sizes, from the Main menu screen, select **Settings** → **General** → **Frame Memory Copy** → **Original Size** (p. 39).
- The resized photos will have lower resolution compared to the original photos, but with smaller file sizes, you can store more photos.




Copy files

Connect an external memory device (SD memory card or USB memory device) to the frame and copy files from the external memory device to the frame or vice versa.

- 1 From the Main menu screen, select a memory location (**Frame Memory**, **SD Card**, or **USB**).
- 2 Scroll to **Photos**, **Videos**, or **Music** and touch .
- 3 Scroll to the file you want to copy and touch 
 - To copy all files in the selected folder, select the folder.
- 4 Scroll to **Copy** and touch 
 - To copy multiple files, select **Select Multiple Files**.
- 5 Select a destination for the files.
 - The selected files will be copied.



Delete files

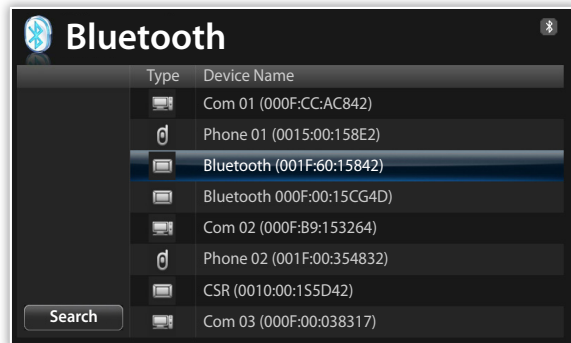
- 1 From the Main menu screen, select a memory location (**Frame Memory**, **SD Card**, or **USB**).
- 2 Scroll to **Photos**, **Videos**, or **Music** and touch .
- 3 Scroll to the file you want to delete and touch 
 - To delete all files in the selected folder, select the folder.
- 4 Scroll to **Delete** and touch 
 - To delete multiple files, select **Select Multiple Files**.
- 5 Select **Yes** to confirm.
 - The selected file will be deleted.







Use the Bluetooth wireless feature

Connect to other wireless devices for exchanging data.

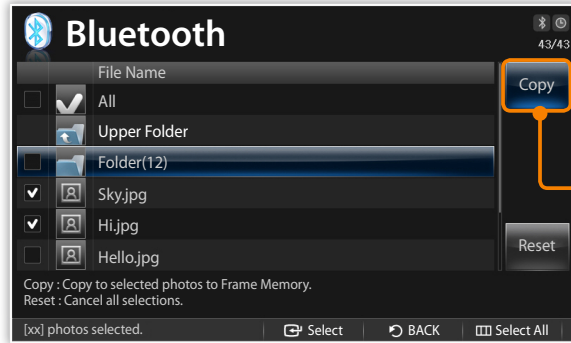
Find and pair with other Bluetooth-enabled devices




- 1 From the Main menu screen, scroll to **Bluetooth** and touch .
 - The Bluetooth wireless feature turns on by default.
 - To turn off the Bluetooth wireless feature, from the Main menu screen, select **Settings** → **Bluetooth** → **Bluetooth Mode** → **Off**.
 - 2 Select **Search** to find other Bluetooth-enabled devices.
 - 3 Scroll to a device and touch .
 - When the owner of the other device enters the same PIN or accepts the connection, pairing is complete. The frame's default PIN is 0000.
 - To end the Bluetooth connection, move to any other screens and the connection will terminate automatically.
 - To end the Bluetooth connection when connected to A2DP devices, such as headsets, scroll to the connected device and touch .
-  • If you repetitively search and cancel Bluetooth functions, the remote control and touch buttons may cease to function due to instability of the frame.
- You cannot receive files when connected to an A2DP device, such as a Bluetooth headset. To receive files, end the connection with the A2DP device.




Get data using the Bluetooth wireless feature



1 In the device list, scroll to one of the paired devices and touch .


2 Scroll to **Photo List** and touch .

- The photo list of the connected device will display.

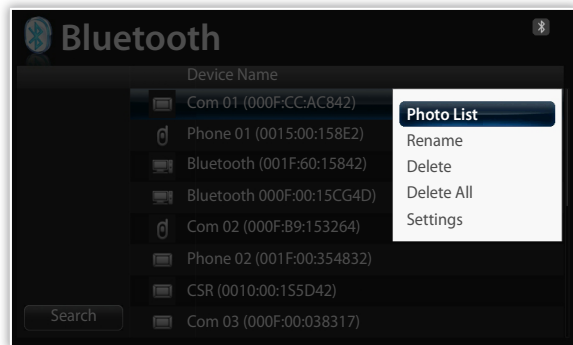
 **Photo List** is deactivated when you connect to a headset or speaker.


3 Select the files you want to copy and select **Copy**.

- The selected files will be copied to the frame's memory.

 You can receive files from an screens except for the Bluetooth screen. If you cannot receive files, restart the Bluetooth wireless feature by selecting **Settings** → **Bluetooth** → **Bluetooth Mode** → **On** and then **Off** (p 40).

Use Bluetooth menus



1 In the device list, scroll to one of the paired devices and touch .


2 Scroll to one of the following menus and touch .

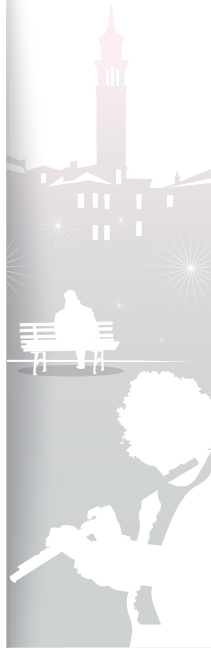
Menu	Description
Photo List*	Access the photo list of the paired device (p. 33)
Rename	Rename the paired device
Delete	Delete one of the paired devices
Delete All	Delete all of the paired devices
Settings	Access the Settings menu (p. 40)

* **Photo List** is deactivated when you select a device that is not connected to the frame.



Information for using Bluetooth

- The Bluetooth wireless feature can transmit data to a maximum of 10 meters (30 feet). This distance may be reduced by obstacles, such as walls or people, or other devices that use or produce radio waves, such as WLAN devices or other mobile phones on the 2.4GHz band. Obstacles or other wireless devices can interfere with the Bluetooth wireless connection and reduce the effective range.
- The frame's wireless antenna is located in front of . For best results, ensure that you are within the maximum distance for a Bluetooth connection and that there are no obstacles between the devices. Interference from other devices may cause the frame to emit unusual noises or function improperly.
- The Bluetooth wireless feature may cause interference with medical devices. Do not use the frame or other Bluetooth-enabled devices in hospitals, airplanes, and trains or near automatic doors, alarms, or flammable gases.
- Your frame supports security settings for safe connections with other Bluetooth-enabled devices. However, you should always take precautions to secure your data when connecting to other Bluetooth-enabled devices. Samsung is not responsible for any loss of private information over a Bluetooth wireless connection.
- The Bluetooth wireless feature in your frame may not be compatible with all Bluetooth-enabled devices. For best results, pair and connect your frame only with devices certified by the Bluetooth SIG and ensure that the Bluetooth profiles of the devices are compatible. Even when a device is certified by the Bluetooth SIG, some incompatibilities may occur and some features or functions may be unavailable.
- When playing music over a Bluetooth wireless connection, you may experience interference from other devices, temporary interruptions in your music, or limited functionality of your frame, depending on wireless devices present in the area or the physical environment.

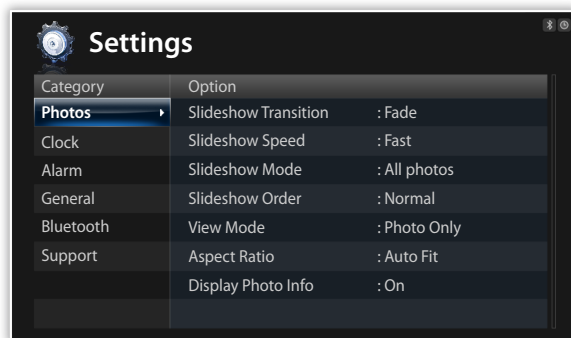




Customize settings

Define frame settings according to your preferences.



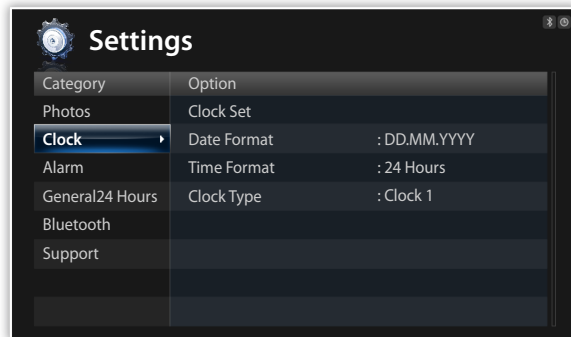
Adjust slideshow effects





- 1 From the Main menu screen, scroll to **Settings** and touch .
- 2 Scroll to **Photos** and touch .
- 3 Select and adjust slideshow effects (p. 22).



Set the time and date

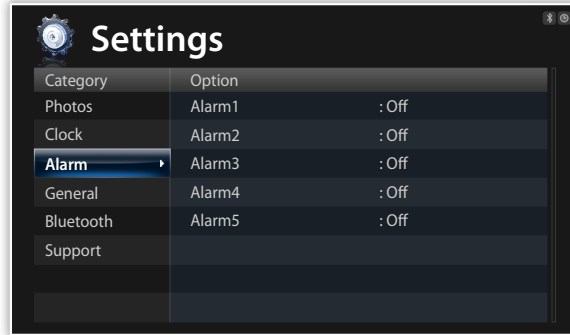


- 1 From the Main menu screen, scroll to **Settings** and touch .
- 2 Scroll to **Clock** and touch .
- 3 Set the time and date and customize the clock settings (p. 13).










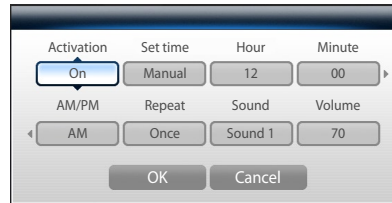
Set and use alarms



Set and control alarms for important events.



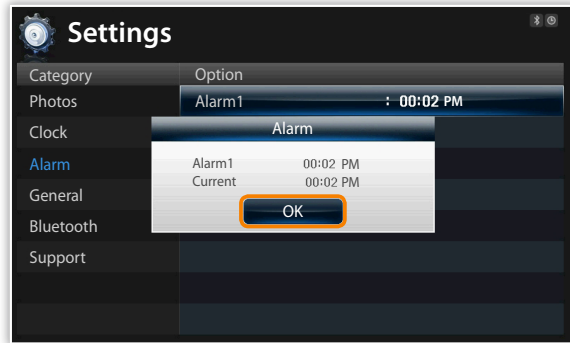
Set a new alarm

- 1 From the Main menu screen, scroll to **Settings** and touch .
- 2 Scroll to **Alarm** and touch .
- 3 Scroll to an empty alarm and touch .
- 4 Touch , , , or  to set alarm details.




- 5 When you are finished, select **OK**.
 -  will appear at the top right corner of the screen.
-  You can only have an alarm for a specified time. Duplicate alarms will be ignored.








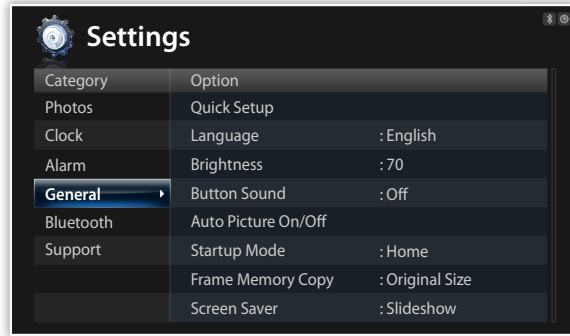
Stop an alarm




When the alarm sounds, touch any button except for  to stop the alarm. If you do not stop the alarm, it will sound for 1 minute.



Deactivate an alarm

- 1 From the Main menu screen, scroll to **Settings** and touch .
- 2 Scroll to **Alarm** and touch .
- 3 Scroll to the alarm you want to deactivate and touch .
- 4 Scroll to **Off** and select **OK**.

Customize general settings

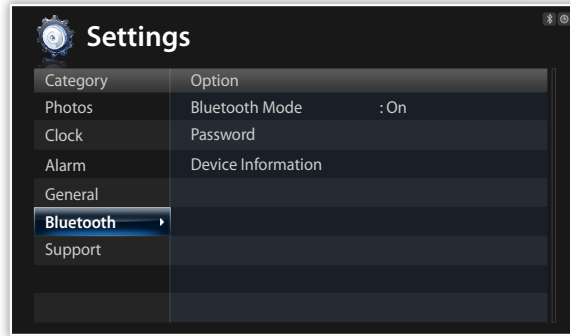





- 1 From the Main menu screen, scroll to **Settings** and touch .
- 2 Scroll to **General** and touch .
- 3 Scroll to one of the following options and touch .

Option	Description
Quick Setup	Set up basic settings, including the language for your frame (p. 11)
Language	Select a language to display (p. 11)
Brightness	Adjust the brightness of the screen
Button Sound	Set the button sound
Auto Picture On/Off	Set the time for the screen to turn on or off automatically (for example, you can set the screen to turn off when you go to sleep or turn on when you wake up in the morning)  When you set this options and the screen is off, touch any button except for  to turn it back on again.
Startup Mode	Select a mode to activate when the frame turns on <ul style="list-style-type: none"> • Home: Start with the Main menu • Last Mode: Start with the mode you used last • Slideshow: Start with a slideshow
Frame Memory Copy	<ul style="list-style-type: none"> • Original Size: Copy photos in their original size • Resized: Copy photos in reduced sizes for optimal resolution on the screen
Screen Saver	Select a screensaver (Slideshow or Clock)

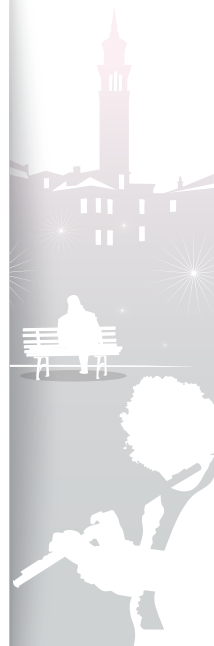


Customize Bluetooth settings

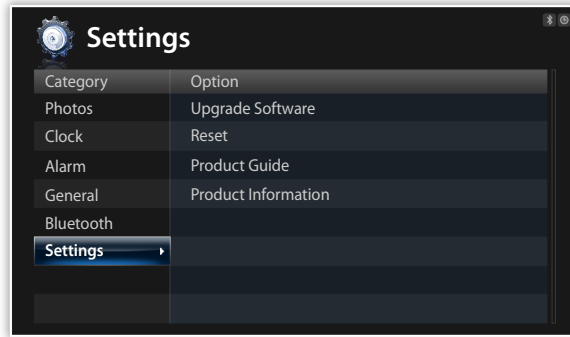





- 1 From the Main menu screen, scroll to **Settings** and touch .
- 2 Scroll to **Bluetooth** and touch .
- 3 Scroll to one of the following options and touch .

Option	Description
Bluetooth Mode	Turn on or off the Bluetooth wireless feature
Password	Set a password for the Bluetooth wireless feature <ul style="list-style-type: none"> • The frame's default PIN is 0000
Device Information	View device information or rename the frame



Update or reset the frame



- 1 From the Main menu screen, scroll to **Settings** and touch .
- 2 Scroll to **Support** and touch .
- 3 Scroll to one of the following options and touch .

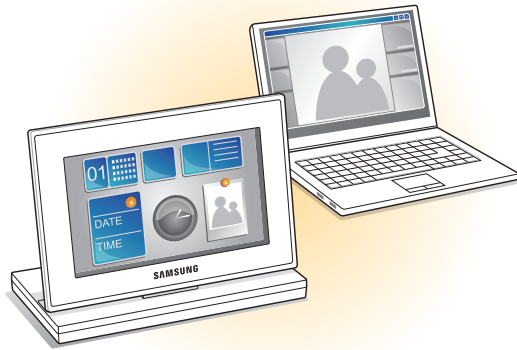
Option	Description
Upgrade Software	Update the frame with the latest firmware (p. 43)
Reset	Reset all settings and options to their factory defaults (except for the time and language settings)
Product Guide	View basic instructions for using your frame
Product Information	View product information, such as model name, firmware version, memory usage, or copyright



Appendix

Use as a PC mini-monitor



You can use the frame as a mini-monitor (supplementary monitor) for a PC. Install the Frame Manager program on your PC and connect the frame to the PC with the USB cable. For more information, visit the Samsung Electronics webpage (<http://www.samsung.com>) and search for “800P” or “1000P”.



System requirements for using the frame as a mini-monitor

- OS: Windows XP (SP2/SP3), Vista (32bit)
- USB: Extended Host Controller (EHCT) for USB 2.0
- RAM: 512 MB or more
- CPU: 2.4 GHz or more

Before use

- Read the Frame Manager User Manual to install the program properly.
- Use the USB cable provided with the frame.
- Do not use the frame as a primary monitor. The screen may not work properly.
- Touch  or  to adjust the brightness when you use the frame as a mini-monitor.
- If you have moved a program icon or window to the secondary monitor, move it back to the primary monitor after use.
- The frame may not function properly with some video cards. In this case, try setting the hardware acceleration to **None**.

To set the hardware acceleration to None,

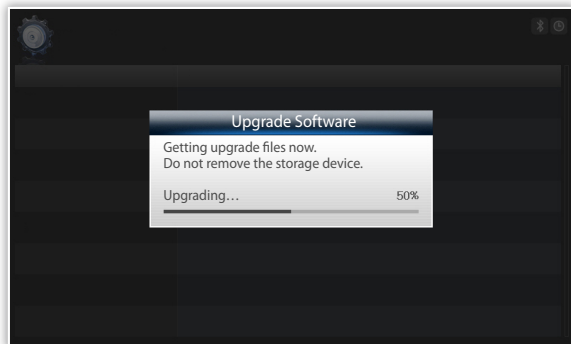
1. Right-click on the Windows desktop, and select **Properties**.
2. When the Display Properties window appears, select **Settings** → **Advanced** → **Troubleshoot** → **Hardware acceleration** and drag the indicator to **None**.

- For Windows Vista, the Aero 3D effect may not function while using the frame as a mini-monitor and some videos may not play on the frame.
- The frame does not function as a Windows Presentation Foundation application.






Update Firmware

Download and install the latest firmware from the Samsung Electronics web page (<http://www.samsung.com>).



- 
 • Back up your files (photos, videos, or music) before updating the firmware to prevent losing them.
- While the update is in progress,
 - Do not disconnect the external device (SD memory card or USB memory device) from the frame.
 - Do not touch any buttons.
 - Do not insert any other memory cards.
 - Do not turn the frame off .
- You can verify that the firmware is updated to the latest version by accessing **Product Information** in **Settings** → **Upgrade Software**.

- 1 Connect the external memory device (SD memory card or USB memory device) to the PC (p. 14).
- 2 Copy the latest firmware you have downloaded to the external memory device.
 - Copy the firmware to the root folder on the memory device.
- 3 Disconnect the external memory device from the PC, and then connect it to the frame.
- 4 From the Main menu screen, scroll to **Settings** and touch .
- 5 Scroll to **Support** and touch .
- 6 Scroll to **Upgrade Software** and touch .
- 7 Select the external memory device.
 - The firmware will be updated.
- 8 When the update is complete, turn the frame off , remove the external memory device (SD memory card or USB memory device), and turn the frame on.


Troubleshooting

Try the following if you have trouble using the frame.

Issue	Resolution
The frame will not turn on.	Verify that the power cable is connected properly.
When connecting the frame to a PC with the USB connector, the screen blinks and the frame turns off automatically.	There may be a problem with the USB port of the PC.
There is light leaking along the border of the clock screen.	If the screen is black, there may be light showing through due to the characteristics of the LCD panel. This is normal.
The time setting is not correct.	When the power adapter is disconnected for a long period of time, the current time settings may be lost. Connect the power adapter at all times.
It takes time for a photo to display when the frame turns on or during a slideshow.	If the resolution of a photo is high or the file size is large, it may take longer to display.
Even though there is free space left on the internal memory, photos will not copy there.	<ul style="list-style-type: none"> • If the FAT section of the internal memory is damaged, photos may not copy there. • Make a folder inside the internal memory to copy photos.
External devices (USB memory device or SD memory card) do not function properly.	<ul style="list-style-type: none"> • Verify that the devices are connected properly. • Verify that the photos stored in the external memory devices are in JPEG format. Corrupted or damaged files will not display. • The device may not be supported by the frame. Try another device.
JPEG photos do not play.	<ul style="list-style-type: none"> • JPEG photos saved in CMYK modes will not display. • JPEG photos edited by image editors (e.g., Photoshop or Paintshop) may not display properly. Save photos in JPEG format after editing on a PC and play the slideshow again.
Some photos will not display in a slideshow.	Your frame can read up to 10,000 photos. Photos exceeding this limit will not display in a slideshow.
The proportion of a photo is not correct.	From the Main menu screen, select Settings → Photos → Aspect Ratio → Original Fit .
The preview plays slowly.	When there are many photos or large file sizes, the preview may be slow.



Troubleshooting (continued)

Issue	Resolution
Even when there is only one photo on the memory card or Slideshow Mode is set to One photo , the slideshow effect is applied to the photo.	The effect is applied to protect the panel.
In what order are the photos displayed on a memory card?	The photos are arranged by file names, in the order of number – upper case letter – lower case letter.
The slideshow will not start automatically.	Verify that Startup Mode is set to Slideshow in Settings → General (p. 39).
I activated the Auto Picture On/Off feature, but the screen does not turn on automatically.	<ul style="list-style-type: none"> • Verify that the current time is set correctly. • If you have touched  to turn the frame off when the Auto Picture On/Off feature is activated, the screen does not turn on automatically. The screen turns on automatically only when the screen was turned off automatically via the Off Time setting.
I want to reset the frame.	Select Reset in Settings → Support to their factory default, but the time and language settings will not be reset.

Specifications

Digital frame

Model name		800P	1000P			
Panel	Type	8" TFT LCD	10" TFT LCD			
	Resolution	800 x 480	1024 x 600			
File formats	Photo	BMP JPEG (CMYK formats not supported) <ul style="list-style-type: none"> Support the maximum resolution of 16,000 X 16,000 Support the maximum ratio from 1:6 to 6:1 				
	Music	MP3 (Frequency: 8 ~ 48 Khz, Bit Rates : 8 ~ 320 Kbps)				
	Video	Video Codec		Format Combination	Capability	
		M-JPEG(*.MOV, *.AVI)	Container	Video	Audio	VGA(640 X 480), 30 Fps, 15000 Kbps
			MOV	JPEG	PCM	
			AVI	MJPEG	PCM	
* PCM : PCM, ADPCM, ALAW, MULAW						
MPEG-1(*.MPG)		Container	Video	Audio	D1(720 X 480), 30 Fps, 2000 Kbps CBR	
	MPG	MPEG-1	MP2			
	* MP2 : MPEG-1 Layer II					
MPEG-4(*.AVI, *.MP4)	Container	Video	Audio	D1(720 X 480), 30 Fps, 2000 Kbps CBR		
	AVI	MPEG-4	MP3/PCM/AC-3			
	MP4	mp4v	AAC			
* MPEG-4 : MPEG-4 ASP						
* AAC: AAC-LC						
Built-in memory		2GB				
USB		Host (USB 2.0) / Device (USB 2.0)				



Specifications (continued)

Power	Rating	External DC 12V	
	Consumption	On: 11 W / Off: less than 1 W	On: 11 W / Off: less than 1 W
General	Dimension (W x H x D)	228.0 mm X 167.4 mm X 118.0 mm (When the frame is set up)	272.0 mm X 197.4 mm X 118.0 mm (When the frame is set up)
		228.0 mm X 27.0 mm X 193.4 mm	272.0 mm X 27.0 mm X 223.6 mm
	Weight	670 g	750 g

* The design of the product may vary according to the model. Specifications are subject to change without notice.

* This device is a class B digital apparatus.

Bluetooth

Emission Type	F1D
RF power	CLASS II
Transmission Power	0.1 mW
Transmission Frequency	2402 ~ 2480 MHz
Number of channels	79 channels
Modulation System	GFSK / 8D PSK
Communication System	Half-duplex operation

* RF power may differ depending on user environment.

Oscillation System	Crystall Oscillation System
Specifications Version Supported	2.0+EDR
Profile	OPP(Client), FTP(Server/Client), A2DP, AVRCP, GAVDP
Bluetooth QD ID	B015915
Module	BTM0605C4NA
Temperature	0 °C ~ +40 °C
Humidity	0 % ~ 95 %

Correct disposal of the frame

Dispose of the product according to local regulations and applicable laws.



Contact information of Samsung Worldwide

If you have any questions or comments relating to Samsung products, please contact.

Region		Contact Center	Web Site
North America	CANADA	1-800-SAMSUNG (726-7864)	www.samsung.com
	MEXICO	01-800-SAMSUNG (726-7864)	www.samsung.com
	U.S.A	1-800-SAMSUNG (726-7864)	www.samsung.com
Latin America	ARGENTINE	0800-333-3733	www.samsung.com
	BRAZIL	0800-124-421 4004-0000	www.samsung.com
	CHILE	800-SAMSUNG (726-7864)	www.samsung.com
	COLOMBIA	01-8000112112	www.samsung.com
	COSTA RICA	0-800-507-7267	www.samsung.com
	ECUADOR	1-800-10-7267	www.samsung.com
	EL SALVADOR	800-6225	www.samsung.com
	GUATEMALA	1-800-299-0013	www.samsung.com
	HONDURAS	800-7919267	www.samsung.com
	JAMAICA	1-800-234-7267	www.samsung.com
	NICARAGUA	00-1800-5077267	www.samsung.com
	PANAMA	800-7267	www.samsung.com
	PUERTO RICO	1-800-682-3180	www.samsung.com
	REP. DOMINICA	1-800-751-2676	www.samsung.com
	TRINIDAD & TOBAGO	1-800-SAMSUNG (726-7864)	www.samsung.com
	VENEZUELA	0-800-100-5303	www.samsung.com
	Europe	AUSTRIA	0810 - SAMSUNG (7267864, € 0.07/min)
BELGIUM		02-201-24-18	www.samsung.com/be (Dutch) www.samsung.com/be_fr (French)
CZECH		800 - SAMSUNG (800-726786)	www.samsung.com Samsung Zrt., česká organizační složka, Oasis Florenc, Sokolovská394/17, 180 00, Praha 8
DENMARK		70 70 19 70	www.samsung.com
EIRE		0818 717100	www.samsung.com
ESTONIA		800-7267	www.samsung.com
FINLAND		030 - 6227 515	www.samsung.com

Region		Contact Center	Web Site
Europe (continued)	FRANCE	01 48 63 00 00	www.samsung.com
	GERMANY	01805 - SAMSUNG (726-7864 € 0,14/Min)	www.samsung.com
	HUNGARY	06-80-SAMSUNG (726-7864)	www.samsung.com
	ITALIA	800-SAMSUNG (726-7864)	www.samsung.com
	LATVIA	8000-7267	www.samsung.com
	LITHUANIA	8-800-77777	www.samsung.com
	LUXEMBURG	261 03 710	www.samsung.com
	NETHERLANDS	0900-SAMSUNG (0900-7267864) (€ 0,10/Min)	www.samsung.com
	NORWAY	815-56 480	www.samsung.com
	POLAND	0 801 1SAMSUNG (172678) 022-607-93-33	www.samsung.com
	PORTUGAL	80820-SAMSUNG (726-7864)	www.samsung.com
	SLOVAKIA	0800-SAMSUNG (726-7864)	www.samsung.com
	SPAIN	902 - 1 - SAMSUNG (902 172 678)	www.samsung.com
	SWEDEN	0771 726 7864 (SAMSUNG)	www.samsung.com
	SWITZERLAND	0848 - SAMSUNG (7267864, CHF 0.08/min)	www.samsung.com/ch www.samsung.com/ch_fr/ (French)
	U.K	0845 SAMSUNG (7267864)	www.samsung.com
	CIS	RUSSIA	8-800-555-55-55
ARMENIA		0-800-05-555	
AZERBAIJAN		088-55-55-555	
BELARUS		810-800-500-55-500	
GEORGIA		8-800-555-555	
KAZAKHSTAN		8-10-800-500-55-500	
KYRGYZSTAN		00-800-500-55-500	www.samsung.com
MOLDOVA		00-800-500-55-500	
TADJIKISTAN		8-10-800-500-55-500	www.samsung.com
UKRAINE		0-800-502-000	www.samsung.ua www.samsung.com/ua_ru
UZBEKISTAN	8-10-800-500-55-500	www.samsung.com	

Contact information of Samsung Worldwide (continued)

Region	Contact Center	Web Site
Asia Pacific	AUSTRALIA	1300 362 603 www.samsung.com
	CHINA	400-810-5858 010-6475 1880 www.samsung.com
	HONG KONG	(852) 3698-4698 www.samsung.com/hk www.samsung.com/hk_en/
	INDIA	3030 8282 1800 110011 1800 3000 8282 1800 266 8282 www.samsung.com
	INDONESIA	0800-112-8888 021-5699-7777 www.samsung.com
	JAPAN	0120-327-527 www.samsung.com
	MALAYSIA	1800-88-9999 www.samsung.com
	NEW ZEALAND	0800 SAMSUNG (0800 726 786) www.samsung.com
	PHILIPPINES	1-800-10-SAMSUNG (726-7864) 1-800-3-SAMSUNG (726-7864) 1-800-8-SAMSUNG (726-7864) 02-5805777 www.samsung.com

Region	Contact Center	Web Site
Asia Pacific (continued)	SINGAPORE	1800-SAMSUNG (726-7864) www.samsung.com
	TAIWAN	0800-329-999 www.samsung.com
	THAILAND	1800-29-3232 02-689-3232 www.samsung.com
	VIETNAM	1 800 588 889 www.samsung.com
Middle East & Africa	BAHRAIN	8000-4726
	JORDAN	800-22273
	SOUTH AFRICA	0860-SAMSUNG (726-7864) www.samsung.com
	TURKEY	444 77 11 www.samsung.com
	U.A.E	800-SAMSUNG (726-7864) www.samsung.com

Software License

To send inquiries and requests for questions regarding open sources, contact Samsung via Email (vdsmanager@samsung.com).

- This product uses some software programs which are distributed under the Independent JPEG Group.
- This product uses some software programs which are distributed under the Freetype Project.
- This product uses some software programs which are distributed under the OpenSSL Project.
- This product uses some software programs which are distributed under the MPL.
- This product uses some software programs which are distributed under the GPL/LGPL license.

GPL software: Linux Kernel, Busybox, Binutils, U-boot, wireless_tools, pump / LGPL software: Glibc, ffmpeg, smpeg, libgphoto2, libusb, libptp, SDL, libiconv

To see more details, click **Software License** on the main screen of the CD-ROM.

A

alarm

- creat, 37
- stop, 38

aspect ratio, 23

B

basic settings, 11

Bluetooth

- Bluetooth mode, 32
- receive data, 32

brightness, 39

C

clock

- clock type, 13
- date format, 13
- time and date, 13
- time format, 13

connect

- external memory devices, 14
- PC, 16

F

file

- browse files, 28
- copy files, 30
- delete files, 31
- manage files, 29
- transfer files, 17

firmware upgrade, 43

Frame Manager, 42

L

language, 11, 39

M

- main menu, 12
- mass storage, 17
- memory location, 15
- mini monitor, 42

music

- mode, 27
- order, 27
- play music, 26
- repeat, 27
- settings, 27

P

PC requirements, 42

product disposal, 47

product information, 40

Q

quick setup, 11

R

- remote control, 9
- reset settings, 41
- rotate, 21



S

screensaver, 39

slideshow

aspect ratio, 23

background music, 21

display photo info, 23

mode, 22

order, 23

play slideshow, 19

rotate, 21

settings, 21

speed, 22

transition, 22

view mode, 20, 23

zoom, 21

specifications, 46

startup mode, 39

supplementary monitor, 42

T

touch buttons, 7

troubleshooting, 44

U

USB connector, 16

V

video

mode, 25

order, 25

play video, 24

repeat, 25

settings, 25

view mode, 20

Z

zoom, 21



